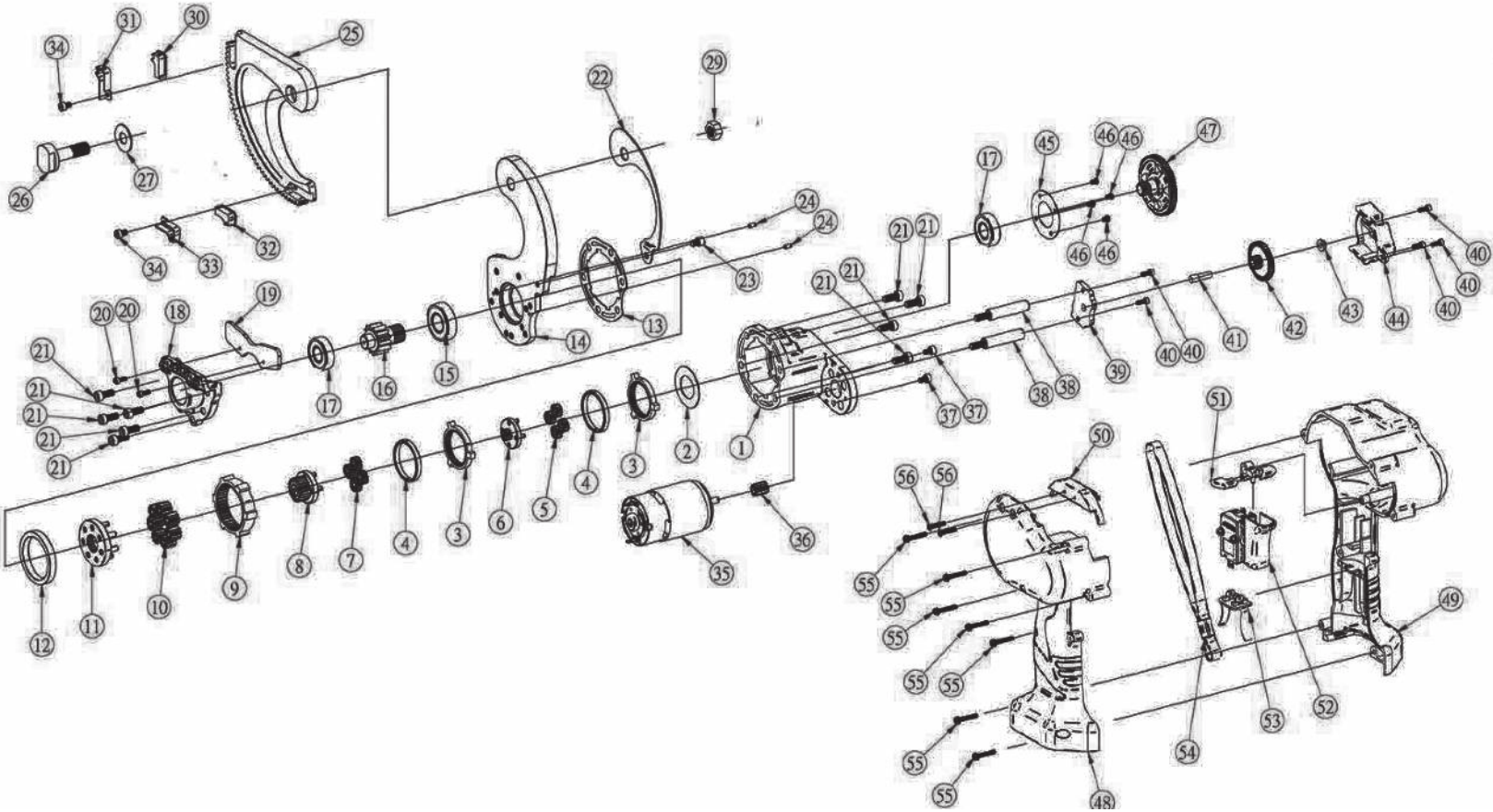




Huskie TOOLS

REC-54ACM BREAKDOWN



REC-54ACM PARTS LIST

NO.	DESCRIPTION	CODE	QTY
1	Gear Box	RCM-044	1
2	Washer	RCM-043	1
3	Ring Gear	RCM-042	2
4	Rubber Washer	RCM-041	2
5	First Gear Set	RCM-039	4
6	First Gear Base	RCM-037	1
7	Second Gear Set	RCM-036	4
8	Second Gear Base	RCM-034	1
9	Ring Gear	RCM-040	1
10	Third Gear Set	RCM-032	7
11	Third Gear Base	RCM-030	1
12	Aluminum Ring	RCM-029	1
13	Washer	RCM-053	1
14	Fixed Blade for REC-54ACM	RCM-002AC	1
15	Bearing	RCM-006	1
16	Pinion Gear	RCM-005	1
17	Bearing	RCM-004	2
18	Bearing Base for REC-54ACM	RCM-003AC	1
19	Fixed Piece	RCM-007	1
20	Screw (M3 x 0.5 x 6L)	RCM-023	2
21	Screw (M5 x 0.8 x 12L)	RCM-024	9
22	Protector	RCM-010	1
23	Screw (M5 x 0.8 x 6L)	RCM-026	1
24	Pin	RCM-059	2
25	Moveable blade for REC-54ACM	RCM-001AC	1
26	Shoulder Bolt	RCM-025	1
27	Washer	RCM-063	1
28			
29	Nut	RCM-064	1
30	Spring Gear Base	RCM-009-1	1
31	Spring Gear	RCM-009	1
32	Spring Gear Base	RCM-008-1	1
33	Spring Gear	RCM-008-1	1
34	Screw (M4 x 0.7 x 4L)	RCM-060	2
35	Motor	RCM-013	1
36	Motor Gear	RCM-044-1	1
37	Screw (M4 x 0.7 x 6L)	RCM-095	2
38	Bolt	RCM-099	1
39	Gear Box Side Plate	RCM-098	1
40	Screw (M3 x 0.5 x 8L)	RCM-061	5
41	Axis	RCM-050	1

NO.	DESCRIPTION	CODE	QTY
42	Gear	RCM-051	1
43	Axis Protector	RCM-096	1
44	Back Cover	RCM-052	1
45	Fixed Plate	RCM-048	1
46	Screw (M2 x 0.5 x 5L)	RCM-062	4
47	Gear	RCM-049	1
48	Housing (L)	RCM-020	1
49	Housing ®	RCM-011	1
50	Brush Base for REC-54ACM	RCM-012	1
51	Adjustive Rod	RCM-054	1
52	Switch	RCM-055	1
53	Contact	RCM-018	1
54	Strap	RCM-056	1
55	Screw (M3 x 0.5 x 20L)	RCM-057	7
56	Screw (M3 x 0.5 x 16L)	RCM-058	2